



MARCH 2000

**1305.5**

# **MONTHLY SUMMARY OF STATISTICS**

**WESTERN  
AUSTRALIA**

EMBARGO: 11:30AM (CANBERRA TIME) FRI 31 MAR 2000

## **C O N T E N T S**

	<i>page</i>
Notes .....	2

### TABLES

<b>1</b> Population .....	4
<b>2</b> Tourism .....	8
<b>3</b> Employment .....	14
<b>4</b> Retail .....	19
<b>5</b> Construction .....	20
<b>6</b> Production .....	23
<b>7</b> Overseas Trade .....	27
<b>8</b> Transport .....	29
<b>9</b> Finance .....	30
<b>10</b> Statistical Summary .....	31

- For more information about these and related statistics, contact Information Services on Perth 08 9360 5140, or Client Services in any ABS office as shown on the back cover of this publication.

## NOTES

### FORTHCOMING ISSUES

<i>ISSUE</i>	<i>RELEASE DATE</i>
April 2000	28 April 2000
May 2000	31 May 2000
June 2000	30 June 2000
July 2000	31 July 2000
August 2000	31 August 2000
September 2000	29 September 2000



### SYMBOLS AND OTHER USAGES

n.a.	not available
n.e.i.	not elsewhere included
n.p.	not available for publication but included in totals where applicable
n.y.a.	not yet available
—	nil or rounded to zero
..	not applicable
*	subject to sampling variability too high for most practical purposes
p	preliminary - figure or series subject to revision
r	figure or series revised since previous issue
—	break in continuity of series (where drawn between two consecutive figures or columns)



### INQUIRIES

For information about other ABS statistics and services, please refer to the back of this publication.

For further information about these statistics, contact Information Services on (08) 9360 5140.

Colin Nagle  
Regional Director, Western Australia

# CONTENTS

Page

## TABLES

### Population

1.1	Estimated Resident Population	4
1.2	Components of Population Change	5
1.3	Registration of Births, Deaths, Marriages and Divorces	6
1.4	Rates of Births, Deaths, Marriages and Divorces	7

### Tourism

2.1	Overseas Arrivals and Departures	8
2.2	Short-term Overseas Visitor Arrivals from Selected Countries	9
2.3	Short-term Overseas Visitor Arrivals by Air for Holiday	10
2.4	Short-term Departures of Residents to Selected Destinations	11
2.5	Short-term Departures of Residents by Air to Selected Destinations: Holiday	12
2.6	Tourist Accommodation	13

### Employment

3.1	Labour Force Status: Seasonally Adjusted	14
3.2	Labour Force Status: Trend	15
3.3	Average Weekly Earnings of Employees: Trend	16
3.4	Industrial Disputes Causing Stoppage of Work	17
3.5	Wage and Salary Earners: Industry-Sector	18

### Retail

4.1	Monthly Retail Turnover	19
-----	-------------------------	----

### Construction

5.1	Dwelling Units Approved	20
5.2	Value of Non-Residential Building Approved	21
5.3	Selected Housing Price Indexes: Perth	21
5.4	Price Index of Materials Used in Building Other Than House Building:Perth	22

### Production

6.1	Livestock Slaughtered	23
6.2	Meat Produced	23
6.3	Wool Receivals and Live Sheep Exports	24
6.4	Energy Production	25
6.5	Mineral Exploration: Expenditure by Type of Mineral Sought	26
6.6	Mineral Production	26

### Overseas Trade

7.1	Imports by Selected Divisions	27
7.2	Exports by Selected Divisions	28

### Transport

8.1	New Motor Vehicle Registrations	29
8.2	Vehicle Registration Statistics	29

### Finance

9.1	Private New Capital Expenditure by Selected Industry Groups	30
-----	---	----

### Statistical Summary

10.1	Statistical Summary	31
------	---------------------	----

# 1.1

## ESTIMATED RESIDENT POPULATION

	<i>Males</i>	<i>Females</i>	<i>Persons</i>
	no.	no.	no.
<b>Financial Years</b>			
1996-97	904 382	893 488	1 797 870
1997-98	920 549	908 596	1 829 145
1998-99	937 021	923 995	1 861 016
<b>Calendar Years</b>			
1996	896 075	885 793	1 781 868
1997	911 349	900 247	1 811 596
1998	928 961	916 588	1 845 549
<b>Quarters</b>			
Mar 98	916 718	905 101	1 821 819
Jun 98	920 549	908 596	1 829 145
Sep 98	925 267	912 922	1 838 189
Dec 98	928 961	916 588	1 845 549
Mar 99	933 768	920 864	1 854 632
Jun 99	937 021	923 995	1 861 016

Source: ABS Catalogue No. 3101.0 (Table 4).

### ANALYSIS OF TABLE 1.1

The estimated resident population of Western Australia at 30 June 1999 was 1,861,016. The population increased by 6,384 in the June 1999 quarter and increased by 31,871 or 1.7% in the year ended 30 June 1999.

# 1.2 COMPONENTS OF POPULATION CHANGE

	Natural increase	Net estimated overseas migration(a)	Net estimated interstate migration	Total increase(b)
	no.	no.	no.	no.
<b>Financial Years</b>				
1996-97	14 158	12 267	6 189	32 614
1997-98	13 715	12 834	4 726	31 275
1998-99	14 220	15 876	1 775	31 871
<b>Calendar Years</b>				
1996	13 980	12 334	5 683	31 997
1997	13 675	10 761	5 292	29 728
1998	14 215	15 864	3 874	33 953
<b>Quarters</b>				
Mar 98	3 761	4 776	1 686	10 223
Jun 98	3 731	2 715	880	7 326
Sep 98	3 348	4 520	1 176	9 044
Dec 98	3 375	3 853	132	7 360
Mar 99	3 442	5 210	431	9 083
Jun 99	4 055	2 293	36	6 384

(a) Includes an adjustment for 'category jumping'.

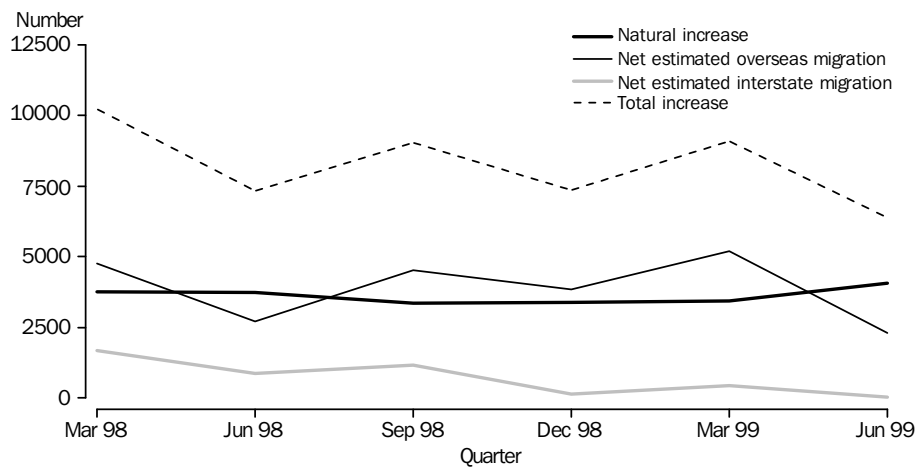
(b) Differences between total growth and the sum of natural increase and net migration arise from retrospective adjustments (which are made after every Census) to compensate for any intercensal discrepancy.

Source: ABS Catalogue No. 3101.0 (Table 2).

## ANALYSIS OF TABLE 1.2

During the June quarter of 1999, the population of Western Australia increased by 6,384 compared with a population increase of 9,083 in the previous quarter. Natural increase was up 17.8% on the March 1999 quarter. There were decreases of 2,917 (56%) and 395 (92%) in overseas migration and interstate migration respectively.

## COMPONENTS OF POPULATION CHANGE, WESTERN AUSTRALIA



Source: ABS Catalogue No. 3101.0.

# 1.3 REGISTRATION OF BIRTHS, DEATHS, MARRIAGES AND DIVORCES

	Live Births (a)	Infant Deaths (a)	Total Deaths (a)	Marriages	Divorces
<b>Financial Years</b>					
1996-97	24 744	133	10 586	10 372	4 931
1997-98	24 705	138	10 990	10 457	5 112
1998-99	25 010	103	10 790	10 593	5 328
<b>Calendar years</b>					
1996	24 905	145	10 925	10 294	4 959
1997	24 514	136	10 839	10 456	5 046
1998	24 965	117	10 750	10 705	5 268
<b>Quarters</b>					
Mar 98	6 166	25	2 405	2 726	1 219
Jun 98	6 339	32	2 608	2 741	1 213
Sep 98	6 328	34	2 980	1 550	1 463
Dec 98	6 132	26	2 757	3 688	1 373
Mar 99	5 957	24	2 515	2 753	1 207
Jun 99	6 593	19	2 538	2 602	1 285

(a) NOTE: With the exception of preliminary data estimates, births and deaths are included by State or Territory of usual residence and year of occurrence. For preliminary estimates births and deaths are included by State or Territory of usual residence and year of registration.

Source: ABS Catalogue No. 3101.0 (Tables 11, 12, 13, 14 & 15).

## ANALYSIS OF TABLE 1.3

The number of live births in the June quarter 1999 rose by 636 or 10.7% on the previous quarter and was 254 or 4.0% more than in the same quarter of 1998.

There were 19 infant deaths in the June quarter of 1999, 5 fewer than in the March quarter of 1999, and 13 less than in the June quarter of 1998.

Total deaths rose by 23 or 0.9% from the March quarter of 1999, and were 70 or 2.7% less than in the June quarter of 1998.

The number of marriages in the June quarter of 1999 decreased by 5.5% or 151 less than in the previous quarter, and was 5.1% or 139 less than in the same quarter of 1998.

The number of divorces increased from 1,207 in the March 1999 quarter to 1,285 in the June 1999 quarter, an increase of 6.5%. This was 5.9% or 72 more than in the June 1998 quarter.

# 1.4

## RATES OF BIRTHS, DEATHS, MARRIAGES AND DIVORCES

	Live Births(a)	Infant Mortality(b)	Total Deaths(a)	Marriages(a)	Divorces(a)
<b>Financial Years</b>					
1996–97	13.8	5.4	5.9	5.8	2.7
1997–98	13.5	5.6	6.0	5.7	2.8
1998–99	13.4	4.1	5.8	5.7	2.9
<b>Calendar years</b>					
1996	14.0	5.8	6.1	5.8	2.8
1997	13.5	5.5	6.0	5.8	2.8
1998	13.5	4.7	5.8	5.8	2.9
<b>Quarters</b>					
Mar 98	13.6	4.1	5.3	6.0	2.7
Jun 98	13.9	5.0	5.7	6.0	2.7
Sep 98	13.8	5.4	6.5	3.4	3.2
Dec 98	13.3	4.2	6.0	8.0	3.0
Mar 99	12.9	4.0	5.4	6.0	2.6
Jun 99	14.2	2.9	5.5	5.6	2.8

(a) For financial and calendar years the rate is per 1,000 estimated resident population at 31 December and 30 June, respectively. For quarters, the rate is per 1,000 of the average of the previous and current quarterly populations.

(b) Infant deaths per 1,000 live births.

Source: ABS Catalogue No. 3101.0.

### ANALYSIS OF TABLE 1.4

The crude birth rate, crude death rate and crude divorce rate, in the June quarter of 1999, all increased over the March quarter of 1999. The crude marriage rate and crude infant mortality rates for the June quarter of 1999 were lower than in the March quarter of 1999.

In the June quarter of 1999, the crude infant mortality rate, crude death rate and crude marriage rate were lower than in the same quarter of the previous year. The crude divorce rate and crude birth rate were higher than in the same quarter of the previous year.

*For more information regarding tables on Vital statistics, please contact Sue Lee on (08) 9360 5935.*

# 2.1 OVERSEAS ARRIVALS AND DEPARTURES

	SHORT-TERM ARRIVALS.....			LONG-TERM ARRIVALS.....		Total Arrivals
	Permanent Arrivals	West Australian Residents	Overseas Visitors	West Australian Residents	Overseas Visitors	
<b>Financial Years</b>						
1996-97	10 520	334 750	397 610	8 880	11 650	763 410
1997-98	9 750	379 660	402 400	9 340	12 880	814 000
1998-99	10 670	397 820	410 840	7 290	13 390	840 010
<b>Months</b>						
Oct 98	860	49 620	35 710	590	1 010	87 790
Nov 98	810	33 300	38 800	740	640	74 290
Dec 98	920	23 510	47 400	1 140	640	73 610
Jan 99	1 050	44 650	33 950	680	2 090	82 420
Feb 99	910	26 370	41 510	540	2 580	71 910
Mar 99	880	26 070	38 100	580	660	66 290
Apr 99	910	28 620	32 390	450	900	63 260
May 99	910	28 000	27 520	450	640	57 540
Jun 99	790	27 930	28 150	540	710	58 120
Jul 99	1 020	41 420	33 100	610	2 180	78 360
Aug 99	1 050	37 860	32 990	590	710	73 220
Sep 99	1 040	38 480	36 070	670	770	77 020
Oct 99	920	42 590	40 540	710	920	85 680
Nov 99	910	27 480	45 770	1 030	620	75 800
Dec 99	870	20 660	44 350	1 200	610	67 690

	SHORT-TERM DEPARTURES.....			LONG-TERM DEPARTURES.....		Total Departures
	Permanent Departures	West Australian Residents	Overseas Visitors	West Australian Residents	Overseas Visitors	
<b>Financial Years</b>						
1996-97	3 610	339 990	389 530	8 080	6 180	747 390
1997-98	4 000	387 490	402 850	8 500	7 450	810 300
1998-99	3 970	399 610	413 400	8 880	5 020	830 880
<b>Months</b>						
Oct 98	270	38 950	32 090	620	330	72 260
Nov 98	310	31 580	34 830	630	400	67 750
Dec 98	330	35 170	45 150	780	700	82 130
Jan 99	510	30 710	46 890	1 220	430	79 760
Feb 99	280	26 330	33 360	720	330	61 020
Mar 99	410	32 730	37 620	780	340	71 870
Apr 99	400	25 230	36 300	770	340	63 020
May 99	320	31 920	30 650	750	370	64 000
Jun 99	340	33 610	34 010	590	530	69 080
Jul 99	370	40 280	28 550	700	570	70 480
Aug 99	390	36 300	36 500	780	470	74 430
Sep 99	310	41 700	30 080	620	440	73 150
Oct 99	310	31 180	32 280	680	410	64 850
Nov 99	350	27 780	40 900	720	590	70 350
Dec 99	390	37 410	41 790	690	1 190	81 470

Source: ABS Unpublished Overseas Arrivals and Departures. Since figures have been rounded to the nearest ten, discrepancies may occur between sums of component items and totals.



The total of 67,690 overseas arrivals in December 1999 was 8,110 lower than in the previous month and 5,920 lower than in December 1998.

In December 1999, 20,660 Western Australian residents returned from short-term overseas visits, a decrease of 24.8% on November 1999. In December 1999, 44,350 overseas visitors arrived in Western Australia for short-term visits. This was a decrease of 6.4% on December 1998.

There were 1,200 residents returning to Western Australia in December 1999, after a long-term stay overseas. Arrivals of long-term overseas visitors numbered 610 in December 1999. This was a decrease of 10 over the previous month, and a decrease of 30 on December 1998 figures.

The 37,410 short-term departures of Western Australian residents in December 1999 represented an increase of 34.7% on November 1999, and an increase of 6.4% on December 1998.

Total departures of residents and visitors numbered 81,470 in December 1999, an increase of 15.8% on the previous month and a decrease of 0.8% on December 1998.

## 2.2 SHORT-TERM OVERSEAS VISITOR ARRIVALS FROM SELECTED COUNTRIES (a)

	COUNTRY OF ORIGIN.....					Total(b)
	New Zealand	UK & Ireland	Indonesia	Japan	Singapore	
<b>Financial Years</b>						
1996-97	26 420	69 460	51 600	33 930	63 950	397 610
1997-98	26 410	81 390	34 380	32 620	73 140	402 400
1998-99	27 490	91 820	28 600	34 530	64 890	410 840
<b>Months</b>						
Oct 98	2 100	7 070	2 600	2 730	5 490	35 710
Nov 98	1 910	12 680	1 740	3 080	5 150	38 810
Dec 98	3 190	12 430	2 600	3 630	7 440	47 400
Jan 99	1 530	8 880	4 200	2 290	3 000	33 950
Feb 99	1 670	10 670	2 420	3 500	6 100	41 510
Mar 99	2 610	10 010	1 970	3 580	5 710	38 100
Apr 99	3 060	7 150	2 050	2 520	4 760	32 380
May 99	1 480	4 670	3 130	1 670	5 370	27 520
Jun 99	2 050	4 770	1 390	1 130	9 380	28 150
Jul 99	2 040	5 510	2 490	3 650	4 160	33 100
Aug 99	2 300	4 530	1 970	4 690	5 670	33 000
Sep 99	2 730	7 750	1 440	3 230	6 840	36 070
Oct 99	2 980	11 190	1 620	3 920	4 750	40 540
Nov 99	2 390	14 200	1 050	2 790	9 440	45 770
Dec 99	2 260	8 690	1 920	3 210	7 550	44 350

(a) Comprises travellers whose intended stay is less than twelve months.

(b) Total includes countries not listed in this table.

Source: ABS Unpublished Overseas Arrivals and Departures .

### ANALYSIS OF TABLE 2.2

Short-term visitor arrivals from Singapore decreased by 1,890 on November 1999, and increased by 110 arrivals on December 1998. These arrivals represented 17% of all short-term visitor arrivals. Short-term visitor arrivals from the UK and Ireland decreased by 38.8% on November 1999, and decreased by 30.1% on December 1998. These arrivals represented 19.6% of all short-term visitor arrivals.

## 2.3

### SHORT-TERM OVERSEAS VISITOR ARRIVALS BY AIR, FOR HOLIDAY (a)

	COUNTRY OF ORIGIN.....								Total(b)
	New Zealand	UK & Ireland	Indonesia	Japan	Malaysia	Singapore	Thailand	United States	
<b>Financial Years</b>									
1996-97	6 670	24 050	33 870	27 870	23 600	45 350	10 230	2 590	215 820
1997-98	7 830	27 660	19 580	26 650	23 920	50 470	5 880	3 520	205 550
1998-99	7 710	34 590	12 770	24 560	17 220	41 710	4 720	3 690	192 550
<b>Months</b>									
Oct 98	620	2 520	1 310	1 730	1 160	3 630	410	270	16 860
Nov 98	470	4 820	890	2 460	1 110	3 890	200	350	19 030
Dec 98	890	3 770	1 760	2 870	1 300	5 890	660	390	24 000
Jan 99	550	3 430	2 110	1 600	880	1 250	170	380	14 160
Feb 99	520	5 170	780	2 530	1 940	3 230	170	480	19 490
Mar 99	560	4 240	1 030	2 990	1 360	4 030	370	460	19 510
Apr 99	940	2 760	750	1 930	1 910	3 040	1 350	250	16 210
May 99	440	1 590	1 480	1 150	2 960	3 640	380	150	14 070
Jun 99	680	1 750	550	880	1 250	6 720	230	300	14 470
Jul 99	490	2 070	790	2 900	960	1 660	310	550	14 890
Aug 99	910	1 790	750	3 070	2 000	4 250	410	370	17 710
Sep 99	930	3 190	710	2 440	2 220	4 900	290	260	19 130
Oct 99	1 030	5 150	640	3 340	1 860	3 420	640	270	22 190
Nov 99	540	4 980	350	1 810	2 200	7 380	270	760	23 430
Dec 99	710	3 550	1 290	2 670	1 930	5 780	560	500	25 380

(a) Comprises travellers whose intended stay is less than twelve months.

(b) Total includes countries not listed in this table.

Source: ABS Unpublished Overseas Arrivals and Departures.

#### ANALYSIS OF TABLE 2.3

A total of 25,380 short-term overseas visitors arrived by air for holidays in Western Australia in December 1999, an increase of 8.3% on November 1999, and an increase of 5.8% on December 1998.

In December 1999, 2,670 short-term visitors arrived by air from Japan for holidays. This was an increase of 860 on November 1999, and represented 10.5% of arrivals into Western Australia by this category of holiday maker.

# 2.4

## SHORT-TERM DEPARTURES OF RESIDENTS TO SELECTED DESTINATIONS (a)

COUNTRY OF DESTINATION.....

	New Zealand	UK & Ireland	Indonesia	Malaysia	Singapore	Total(b)
<b>Financial Years</b>						
1996-97	26 580	50 320	89 030	23 620	26 770	339 990
1997-98	30 360	54 190	103 090	25 820	34 520	387 490
1998-99	29 100	51 870	105 920	28 190	41 040	399 610
<b>Months</b>						
Oct 98	2 350	4 730	13 020	2 970	3 370	38 950
Nov 98	2 340	3 460	9 810	2 110	3 320	31 580
Dec 98	4 250	4 270	8 310	2 500	2 260	35 170
Jan 99	2 480	1 600	8 150	2 200	4 670	30 720
Feb 99	2 570	2 940	6 600	2 000	3 440	26 330
Mar 99	3 250	3 920	6 660	2 590	4 970	32 730
Apr 99	2 420	3 060	5 650	2 510	2 480	25 220
May 99	1 000	6 200	6 270	2 110	3 100	31 920
Jun 99	1 450	5 880	6 650	1 820	4 330	33 620
Jul 99	2 440	5 460	10 180	3 650	4 480	40 290
Aug 99	2 620	5 690	8 760	2 870	3 300	36 310
Sep 99	2 590	6 120	7 940	3 430	5 290	41 700
Oct 99	1 490	3 520	4 360	4 300	2 500	31 170
Nov 99	3 360	4 090	3 300	2 330	3 540	27 790
Dec 99	5 670	5 980	5 260	3 240	3 610	37 410

(a) Comprises travellers whose intended stay is less than twelve months.

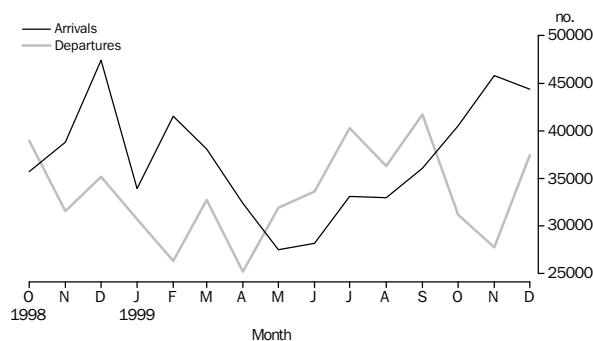
(b) Total includes countries not listed in this table.

Source: ABS Unpublished Overseas Arrivals and Departures.

### ANALYSIS OF TABLE 2.4

In December 1999, 37,410 Western Australian residents departed for short-term periods overseas, an increase of 34.6% on November 1999, and a 6.4% increase on December 1998. Short-term departures of residents to Singapore increased by 70 from the month of November 1999.

### SHORT-TERM ARRIVALS OF OVERSEAS VISITORS AND DEPARTURES OF RESIDENTS



Source: ABS Unpublished Overseas Arrivals and Departures.

# 2.5

## SHORT-TERM DEPARTURES OF RESIDENTS BY AIR TO SELECTED DESTINATIONS : HOLIDAY

COUNTRY OF DESTINATION.....

	New Zealand	UK & Ireland	Indonesia	Malaysia	Singapore	Thailand	United States	Total (b)
<b>Financial Years</b>								
1996-97	10 860	23 760	72 640	10 660	13 480	9 790	9 540	186 540
1997-98	12 500	25 910	85 760	12 820	19 560	18 320	11 440	222 180
1998-99	11 430	19 790	88 350	15 580	21 970	22 040	9 220	222 970
<b>Months</b>								
Oct 98	1 010	1 640	11 460	1 800	1 950	2 880	850	24 390
Nov 98	430	1 000	8 610	1 050	1 320	970	480	16 530
Dec 98	1 180	1 570	6 970	1 350	950	970	1 270	18 300
Jan 99	1 000	560	6 760	1 300	2 690	1 520	460	17 200
Feb 99	1 060	1 290	5 590	990	1 830	1 340	350	14 600
Mar 99	1 670	1 200	5 520	1 750	3 250	1 700	580	18 350
Apr 99	1 270	1 350	4 800	1 550	1 260	1 590	720	14 270
May 99	390	2 370	5 000	1 140	1 590	1 710	990	16 390
Jun 99	** 50	2 520	5 200	690	2 300	1 330	1 140	16 900
Jul 99	990	2 290	8 500	2 540	2 840	3 220	230	24 160
Aug 99	1 170	2 690	7 400	1 420	2 360	2 190	1 090	21 840
Sep 99	1 420	2 800	6 850	2 200	2 760	3 370	1 220	24 890
Oct 99	700	790	3 440	3 190	1 660	3 940	410	17 210
Nov 99	1 220	1 110	2 260	1 190	1 660	1 360	590	11 890
Dec 99	2 250	2 560	3 880	1 930	2 070	1 370	1 420	19 590

(a) Comprises travellers whose intended stay is less than twelve months.

(b) Total includes countries not listed in this table.

\*\* Estimates contain Relative Standard Error greater than 50 %. Refer to Explanatory Notes and Standard Error Section of Catalogue no. 3401.0

Source: ABS Unpublished Overseas Arrivals and Departures.

### ANALYSIS OF TABLE 2.5

There were 19,590 short-term departures by air of Western Australian residents for holidays abroad in December 1999. This was 64.8% more than in November 1999 and 7% more than in December 1998.

Indonesia was the favoured holiday destination for Western Australians, with 19.8% of all short-term departures of residents by air in December 1999.

In December 1999, 2,560 Western Australians departed for holidays in the United Kingdom and Ireland, an increase over December 1998 of 63.1%.

*For more information regarding Overseas Arrivals and Departures, please contact David King on (08) 9360 5903.*

## 2.6 TOURIST ACCOMMODATION

### HOTELS, MOTELS, GUEST HOUSES AND SERVICED APARTMENTS....

	<i>Establishments</i>	<i>Guest rooms</i>	<i>Employment</i>	<i>Room occupancy rates</i>	<i>Guest arrivals</i>	<i>Takings from accommodation</i>
	Number	Number	Persons	%	'000	\$'000
Jul 98				57	209	28 897
Aug 98				59	215	30 078
Sep 98	298	17 015	9 950	63	234	29 762
Oct 98				62	233	31 370
Nov 98				59	204	29 153
Dec 98	300	17 317	9 961	52	213	26 597
Jan 99				54	212	27 913
Feb 99				57	187	26 346
Mar 99	304	17 517	9 962	56	198	28 527
April 99				56	225	28 734
May 99				52	200	26 645
Jun 99	308	17 783	9 785	52	200	26 001
Jul 99				55	229	28 588
Aug 99				56	221	28 572
Sep 99	308	17 804	9 906	66	259	33 083

Source: ABS Product No. 8635.5.40.001. (The December quarter 1997 issue of *Tourist Accommodation, Western Australia*, ABS Catalogue No. 8635.5, was the final issue of this publication).

Note: The scope of the ABS quarterly Survey of Tourist Accommodation (STA) has changed since the December quarter 1997. Some units will have been reclassified and as a result, data will not be strictly comparable with previously published data for particular accommodation types.

From the March quarter 1998, only those in-scope establishments with 15 or more rooms or units are covered by the survey.

From the March quarter 1998, survey results are aggregated to Tourism Regions as defined by relevant State and Territory Tourist Commissions or equivalent organisations.

From the March quarter 1998, the data quoted above for Establishments, Guest rooms and Employment are quarterly.

As part of the future collection strategy of the STA, significant caravan parks, visitor hostels and remaining holiday flats, units and houses will be surveyed triennially, commencing with a year 2000 reference year.

For more information regarding the changes to the STA and the data available from this collection, please refer to the ABS publication Catalogue No. 8635.0.

*For more information relating to Tourist Accommodation, please contact*

*Pamela Prince on (08) 9360 5207.*

# 3.1

## LABOUR FORCE STATUS (AGED 15 YEARS AND OVER): Seasonally Adjusted

	<i>Employed full-time</i>	<i>Total employed</i>	<i>Total unemployed</i>	<i>Unemployment rate</i>	<i>Participation rate</i>
	'000	'000	'000	%	%
<b>Males</b>					
Dec 98	446.4	509.2	42.3	7.7	76.3
Jan 99	446.1	509.9	40.7	7.4	76.1
Feb 99	444.7	508.0	41.0	7.5	75.7
Mar 99	446.2	511.6	38.1	6.9	75.7
Apr 99	447.7	513.5	39.7	7.2	76.0
May 99	441.4	509.1	37.0	6.8	74.9
Jun 99	444.0	508.9	38.4	7.0	74.9
Jul 99	446.2	512.6	36.9	6.7	75.1
Aug 99	448.4	514.9	37.5	6.8	75.4
Sep 99	449.7	516.0	40.6	7.3	75.9
Oct 99	454.2	521.4	41.2	7.3	76.5
Nov 99	456.1	520.8	41.3	7.3	76.3
Dec 99	458.4	523.7	36.1	6.5	75.9
Jan 00	453.8	522.1	42.4	7.5	76.4
Feb 00	461.9	528.4	39.1	6.9	76.7
<b>Females</b>					
Dec 98	205.2	384.5	26.8	6.5	56.8
Jan 99	203.2	383.5	26.4	6.5	56.5
Feb 99	201.4	382.9	28.1	6.8	56.6
Mar 99	196.6	384.5	28.0	6.8	56.7
Apr 99	202.2	384.3	31.9	7.7	57.1
May 99	201.0	386.4	26.3	6.4	56.6
Jun 99	204.8	391.7	24.1	5.8	56.9
Jul 99	205.3	391.5	25.9	6.2	57.0
Aug 99	205.9	398.8	26.2	6.3	56.7
Sep 99	205.7	393.5	26.9	6.4	57.3
Oct 99	212.0	396.4	25.6	6.1	57.4
Nov 99	218.7	405.6	26.2	6.1	58.6
Dec 99	211.6	402.4	23.9	5.6	57.8
Jan 00	210.7	401.9	24.9	5.8	57.8
Feb 00	213.1	401.5	23.5	5.5	57.4
<b>Persons</b>					
Dec 98	651.6	893.7	69.2	7.2	66.6
Jan 99	649.2	893.4	67.1	7.0	66.3
Feb 99	646.1	891.0	69.1	7.2	66.1
Mar 99	642.8	896.1	66.1	6.9	66.2
Apr 99	649.8	897.8	71.6	7.4	66.6
May 99	642.4	895.4	63.4	6.6	65.7
Jun 99	648.8	900.6	62.4	6.5	65.9
Jul 99	651.5	904.1	62.7	6.5	66.1
Aug 99	654.3	904.7	63.7	6.6	66.1
Sep 99	655.4	909.5	67.5	6.9	66.6
Oct 99	666.2	917.8	67.1	6.8	67.0
Nov 99	674.8	926.4	67.5	6.8	67.5
Dec 99	670.0	926.1	60.1	6.1	66.8
Jan 00	664.4	924.0	67.3	6.8	67.1
Feb 00	674.9	929.9	62.6	6.3	67.1

Source: ABS Catalogue No. 6202.0.

### ANALYSIS OF TABLE 3.1

The seasonally adjusted unemployment rate decreased to 6.3% in February 2000.

The seasonally adjusted number of unemployed persons decreased by 4,700 to 62,600, while the number of employed persons increased by 5,900 to 929,900.

Western Australia's seasonally adjusted participation rate for February 2000 increased to 67.1% and continues to be the highest of all the States.

## 3.2 LABOUR FORCE STATUS (AGED 15 YEARS AND OVER): Trend (a)

	Employed full-time	Total employed	Total unemployed	Unemployment rate	Participation rate
	'000	'000	'000	%	%
<b>Males</b>					
Dec 98	446.0	509.0	41.2	7.5	76.2
Jan 99	445.8	509.5	40.9	7.4	76.0
Feb 99	445.6	509.9	40.3	7.3	75.9
Mar 99	445.2	510.2	39.4	7.2	75.7
Apr 99	444.8	510.4	38.5	7.0	75.4
May 99	444.5	510.7	37.9	6.9	75.3
Jun 99	444.9	511.3	37.8	6.9	75.2
Jul 99	446.2	512.6	38.1	6.9	75.3
Aug 99	448.2	514.5	38.7	7.0	75.5
Sep 99	450.6	516.8	39.3	7.1	75.8
Oct 99	453.0	519.2	39.8	7.1	76.0
Nov 99	455.0	521.2	40.0	7.1	76.2
Dec 99	456.7	523.0	40.1	7.1	76.3
Jan 00	458.2	524.7	40.0	7.1	76.4
Feb 00	459.3	526.0	39.9	7.0	76.5
<b>Females</b>					
Dec 98	202.2	384.1	27.0	6.6	56.8
Jan 99	201.7	383.6	27.5	6.7	56.7
Feb 99	201.3	382.7	28.0	6.8	56.7
Mar 99	200.9	384.3	28.2	6.8	56.7
Apr 99	201.0	385.6	27.9	6.7	56.8
May 99	201.6	387.0	27.3	6.6	56.8
Jun 99	202.9	388.6	26.7	6.4	56.8
Jul 99	204.9	390.5	26.2	6.3	56.9
Aug 99	207.1	392.7	25.9	6.2	57.1
Sep 99	209.1	395.2	25.9	6.1	57.4
Oct 99	210.9	397.7	25.8	6.1	57.6
Nov 99	212.2	400.0	25.5	6.0	57.8
Dec 99	213.0	401.8	25.0	5.9	57.8
Jan 00	213.5	403.0	24.5	5.7	57.9
Feb 00	213.6	403.8	24.0	5.6	57.8
<b>Persons</b>					
Dec 98	648.1	893.1	68.1	7.1	66.5
Jan 99	647.6	893.1	68.4	7.1	66.4
Feb 99	646.8	893.6	68.3	7.1	66.3
Mar 99	646.1	894.6	67.6	7.0	66.2
Apr 99	645.8	896.0	66.4	6.9	66.1
May 99	646.1	897.6	65.2	6.8	66.0
Jun 99	647.8	899.8	64.4	6.7	66.0
Jul 99	651.0	903.1	64.3	6.6	66.1
Aug 99	655.2	907.2	64.6	6.6	66.3
Sep 99	659.7	912.0	65.2	6.7	66.6
Oct 99	663.9	916.9	65.6	6.7	66.8
Nov 99	667.2	921.2	65.6	6.6	67.0
Dec 99	669.8	924.8	65.1	6.6	67.1
Jan 00	671.7	927.7	64.5	6.5	67.2
Feb 00	672.9	929.8	63.9	6.4	67.2

(a) Trend estimates for the previous months have been revised.

Source: ABS Catalogue No. 6202.0.

### ANALYSIS OF TABLE 3.2

The trend estimate of the unemployment rate declined to 6.4% in February 2000, while the trend estimate of the participation rate remained at 67.2%.

*For more information regarding these tables, please contact Information Inquiries on (08) 9360 5140.*

# 3.3

## AVERAGE WEEKLY EARNINGS OF EMPLOYEES: Trend

	FULL TIME ADULTS.....		ALL PERSONS
	Ordinary time earnings	Total earnings	Total earnings
	\$	\$	\$
<b>Males</b>			
21 Aug 98	809.80	872.80	740.80
20 Nov 98	808.40	869.30	733.70
19 Feb 99	806.60	865.30	727.10
21 May 99	814.80	871.80	729.10
20 Aug 99	829.20	884.50	735.90
19 Nov 99	845.80	899.40	744.10
<b>Females</b>			
21 Aug 98	625.60	638.30	411.00
20 Nov 98	633.30	645.50	414.70
19 Feb 99	637.80	650.10	417.90
21 May 99	640.90	653.40	420.70
20 Aug 99	645.10	657.20	423.20
19 Nov 99	650.30	661.80	425.00
<b>Persons</b>			
21 Aug 98	744.40	789.60	573.00
20 Nov 98	746.70	790.40	571.90
19 Feb 99	747.10	789.30	571.20
21 May 99	753.10	794.30	574.10
20 Aug 99	763.40	803.40	578.00
19 Nov 99	775.30	814.00	581.10

Source: ABS Catalogue No. 6302.0.

*For more information regarding Average Weekly Earnings, please contact Information Inquiries on (08) 9360 5140.*



## 3.4 INDUSTRIAL DISPUTES CAUSING STOPPAGE OF WORK

### WORKERS INVOLVED.....

	Number of Disputes	Directly	Indirectly	Total	Working days lost
	Number	'000	'000	'000	'000
<b>Calendar Year</b>					
1996	54	36.2	0.0	36.2	47.3
1997	71	30.9	0.9	31.7	60.1
1998	78	28.6	0.1	28.8	61.2
<b>Months</b>					
Oct 98	12	3.3	0.0	3.3	5.3
Nov 98	18	5.1	0.0	5.1	5.7
Dec 98	8	1.7	0.0	1.7	4.4
Jan 99	n.p.	0.6	0.0	0.6	1.2
Feb 99	12	1.1	0.0	1.1	1.8
Mar 99	14	1.9	0.0	1.9	3.4
Apr 99	6	0.7	0.0	0.7	2.6
May 99	16	3.4	0.1	3.5	2.9
Jun 99	11	2.6	0.0	2.6	4.7
Jul 99	18	2.9	0.0	2.9	3.2
Aug 99	13	11.1	0.0	11.1	8.5
Sep 99	10	2.0	0.0	2.0	3.2
Oct 99	17	3.8	0.0	3.8	8.7
Nov 99	8	1.1	0.0	1.1	1.6
Dec 99	10	1.8	0.0	1.8	1.8

Source: Industrial Disputes, Unpublished Data.

In ABS industrial disputes statistics, an industrial dispute is defined as a withdrawal from work by a group of employees (i.e. a strike), or a refusal by an employer or a number of employers to permit some or all of their employees to work (i.e. a lockout), each withdrawal or refusal being made in order to enforce a demand, to resist a demand, or to express a grievance. That is, the statistics cover employee strikes and employer lockouts, but do not cover other action due to labour disputes. (See *Industrial Disputes, Australia*, cat no. 6321.0 Explanatory Notes and Glossary for more details.)

For more information regarding *Industrial Disputes*, please contact Information Inquiries on (08) 9360 5140.

# 3.5

## WAGE AND SALARY EARNERS: INDUSTRY-SECTOR

	NUMBER OF EMPLOYEES.....						GROSS EARNINGS
	May 1998	Aug 1998	Nov 1998	Feb 1999	May 1999	Aug 1999	Sept qtr 1999
	'000	'000	'000	'000	'000	'000	\$m
<b>Industry</b>							
Mining	29.3	29.6	27.2	30.5	29.3	28.2	501.7
Manufacturing	66.5	70.1	70.9	71.8	74.6	73.1	705.1
Electricity, gas and water supply	6.5	6.7	6.3	6.4	6.3	6.0	97.3
Construction	43.0	47.9	45.7	43.8	36.0	34.0	402.6
Wholesale trade	41.2	37.2	35.8	30.6	36.1	44.6	376.0
Retail trade	103.7	105.3	102.6	107.1	110.5	117.6	583.8
Accommodation, cafes & restaurants	38.6	49.1	51.7	57.3	46.7	40.1	177.0
Transport and storage	24.4	26.4	29.5	28.0	24.9	24.8	261.4
Communication services	9.6	9.5	8.9	9.1	8.9	9.4	119.9
Finance & insurance	29.7	29.9	29.4	28.7	28.5	20.9	218.3
Property & business services	101.0	89.0	84.7	84.9	100.9	100.7	770.3
Government administration and defence	31.5	28.3	29.3	29.1	30.1	30.6	316.9
Education	64.4	67.8	64.0	63.5	71.1	70.4	584.4
Health & community services	72.4	74.5	75.6	82.6	80.8	79.7	584.3
Cultural & recreational services	19.6	19.3	15.8	18.6	18.6	14.7	103.5
Personal & other services	24.4	26.0	28.2	26.2	28.2	28.5	214.7
<b>All industries (a)</b>	<b>707.4</b>	<b>718.1</b>	<b>707.2</b>	<b>720.1</b>	<b>733.0</b>	<b>724.9</b>	<b>6 033.9</b>
<b>Sector</b>							
Private	561.6	570.5	561.8	574.6	582.7	574.1	4 497.1
Public	145.8	147.7	145.4	145.5	150.3	150.8	1 536.8

	May 1999.....			Aug 1999.....		
	Full-time	Part-time	Persons	Full-time	Part-time	Persons
	'000	'000	'000	'000	'000	'000
<b>Industry</b>						
Mining	28.6	* 0.7	29.3	27.3	0.8	28.2
Manufacturing	67.9	* 6.7	74.6	66.2	6.9	73.1
Electricity, gas and water supply	6.1	0.2	6.3	5.8	0.2	6.0
Construction	33.8	* 2.1	36.0	32.6	* 1.4	34.0
Wholesale trade	29.8	* 6.3	36.1	35.9	* 8.7	44.6
Retail trade	54.0	56.5	110.5	61.0	56.6	117.6
Accommodation, cafes & restaurants	16.7	30.0	46.7	* 12.9	27.3	40.1
Transport and storage	20.8	* 4.1	24.9	20.6	* 4.2	24.8
Communication services	7.1	1.9	8.9	7.4	2.0	9.4
Finance & insurance	20.9	* 7.6	28.5	16.0	4.9	20.9
Property & business services	61.1	* 39.8	100.9	59.5	* 41.2	100.7
Government administration and defence	23.4	6.7	30.1	24.6	6.0	30.6
Education	40.3	30.9	71.1	39.1	31.3	70.4
Health & community services	36.5	44.3	80.8	36.5	43.1	79.7
Cultural & recreational services	6.9	* 11.6	18.6	7.1	7.6	14.7
Personal & other services	18.7	9.5	28.2	18.4	10.0	28.5
<b>All industries (a)</b>	<b>473.9</b>	<b>259.1</b>	<b>733.0</b>	<b>472.5</b>	<b>252.4</b>	<b>724.9</b>
<b>Sector</b>						
Private	371.0	211.7	582.7	369.4	204.7	574.1
Public	102.9	47.5	150.3	103.0	47.7	150.8

(a) Includes employees of government agencies classified to Agriculture, forestry and fishing.

Source: ABS Catalogue No. 6248.0.

# 4.1

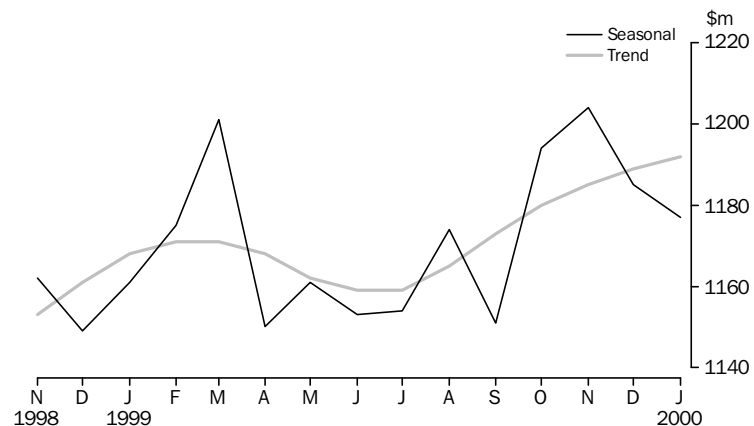
## MONTHLY RETAIL TURNOVER

	Food	Department stores	Clothing and soft goods	Household goods	Recreational goods
	\$m	\$m	\$m	\$m	\$m
<b>Months</b>					
Nov 98	493.6	116.0	56.1	170.7	56.0
Dec 98	584.9	195.2	74.8	216.2	83.5
Jan 99	517.5	92.7	56.0	160.1	50.8
Feb 99	474.0	75.0	45.6	158.1	50.5
Mar 99	518.6	92.3	53.3	170.2	54.9
Apr 99	505.2	90.5	56.0	158.6	49.1
May 99	491.1	110.4	64.2	176.8	51.0
Jun 99	474.0	91.3	57.5	175.9	50.0
Jul 99	506.9	102.0	59.7	179.9	47.3
Aug 99	489.3	88.2	52.5	181.9	46.5
Sep 99	499.0	99.1	55.6	176.1	43.5
Oct 99	532.5	108.6	62.0	187.4	54.4
Nov 99	523.5	120.9	68.4	193.0	59.3
Dec 99	629.7	204.7	89.1	230.7	75.8
Jan 00	507.8	91.2	56.8	177.6	58.8

	Hospitality and services	Other	Total	Seasonally adjusted	Trend estimates
	\$m	\$m	\$m	\$m	\$m
<b>Months</b>					
Nov 98	160.3	121.0	1 173.7	1 161.9	1 152.9
Dec 98	184.3	169.7	1 508.6	1 148.8	1 160.9
Jan 99	156.9	110.5	1 144.4	1 161.0	1 167.7
Feb 99	148.7	102.2	1 054.1	1 175.1	1 171.1
Mar 99	153.3	111.7	1 154.2	1 201.1	1 170.9
Apr 99	149.1	100.1	1 108.6	1 150.3	1 167.4
May 99	144.5	99.9	1 137.8	1 161.2	1 162.3
Jun 99	135.6	97.0	1 081.3	1 153.4	1 158.5
Jul 99	150.9	99.2	1 145.9	1 154.0	1 159.0
Aug 99	147.5	102.9	1 108.8	1 173.5	1 164.6
Sep 99	146.8	105.7	1 125.8	1 150.7	1 173.0
Oct 99	162.6	111.9	1 219.3	1 194.1	1 180.2
Nov 99	150.2	117.1	1 232.4	1 203.9	1 185.5
Dec 99	167.5	159.5	1 557.0	1 184.7	1 189.4
Jan 00	140.5	120.4	1 153.1	1 177.4	1 191.8

Source: ABS Catalogue No. 8501.0.

## MONTHLY RETAIL TURNOVER



Source: ABS Catalogue No. 8501.0.

# 5.1

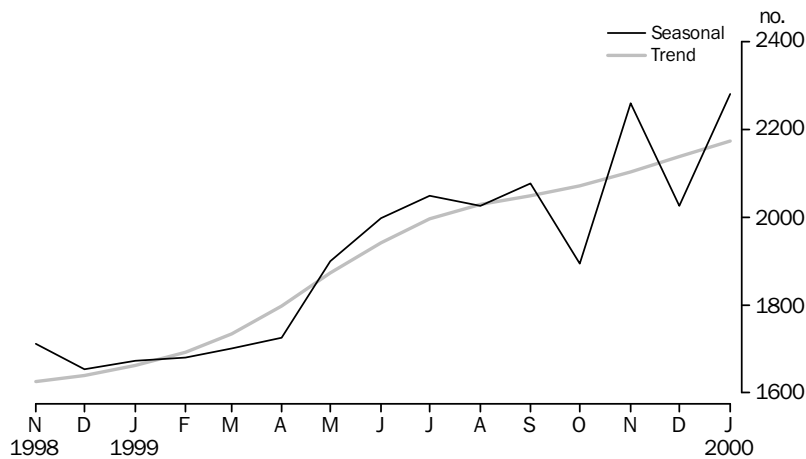
## DWELLING UNITS APPROVED

	NEW HOUSES.....		NEW OTHER RESIDENTIAL BUILDINGS.....		TOTAL (a).....	
	Dwelling Units	Value	Dwelling Units	Value	Dwelling Units	Value
	No.	\$m	No.	\$m	No.	\$m
<b>Financial years</b>						
1996-97	13 632	1 348.9	2 013	175.8	15 742	2 901.8
1997-98	15 828	1 634.2	2 526	222.0	18 460	2 943.8
1998-99	17 399	1 898.5	2 949	298.3	20 523	3 526.6
<b>Months</b>						
Nov 98	1 401	149.5	229	28.5	1 649	272.4
Dec 98	1 391	155.4	231	24.7	1 641	278.8
Jan 99	1 148	127.4	157	20.9	1 307	365.0
Feb 99	1 290	140.7	253	28.9	1 547	344.0
Mar 99	1 606	176.3	254	22.6	1 938	318.5
Apr 99	1 424	154.5	189	20.4	1 625	264.6
May 99	1 630	177.0	306	26.7	1 941	286.9
Jun 99	1 761	203.8	612	46.2	2 386	339.5
Jul 99	1 686	183.8	345	42.9	2 043	354.2
Aug 99	1 745	191.0	290	26.8	2 067	354.7
Sep 99	1 609	183.2	449	43.0	2 063	377.3
Oct 99	1 643	188.9	170	17.4	1 819	360.4
Nov 99	2 009	235.4	365	34.4	2 389	390.3
Dec 99	1 701	196.6	234	23.0	1 976	298.5
Jan 00	1 403	169.6	249	25.6	1 675	269.2

(a) Includes alterations, additions, conversions and non-residential buildings.

Source: ABS Catalogue No. 8731.5.

### TOTAL DWELLING UNITS APPROVED



Source: ABS Catalogue No. 8731.5.

For more information regarding Building Approvals, please contact Pamela Prince on (08) 9360 5207.

# 5.2

## VALUE OF NON-RESIDENTIAL BUILDING APPROVED

	Private	Public	Total
	\$m	\$m	\$m
<b>Financial Years</b>			
1996-97	773.9	430.0	1204.5
1997-98	706.7	193.3	899.8
1998-99	896.2	210.7	1 106.9
<b>Months</b>			
Nov 98	64.0	13.0	77.0
Dec 98	54.4	25.1	79.5
Jan 99	163.8	33.3	197.1
Feb 99	121.3	34.9	156.3
Mar 99	81.6	12.0	93.5
Apr 99	62.1	9.2	71.3
May 99	48.5	16.9	65.4
Jun 99	56.3	17.2	73.4
Jul 99	57.2	45.4	102.6
Aug 99	61.1	51.7	112.8
Sep 99	58.7	74.6	133.3
Oct 99	69.8	65.4	135.3
Nov 99	48.1	46.9	95.1
Dec 99	43.9	17.5	61.3
Jan 00	38.6	18.7	57.3

Source: ABS Catalogue No. 8731.5.

For more information regarding Building Approvals, please contact Pamela Prince on (08) 9360 5207.

# 5.3

## SELECTED HOUSING PRICE INDEXES: PERTH

	Materials used in house building	Established homes	Project homes
<b>Financial Years</b>			
1996-97	115.3	109.2	101.3
1997-98	115.9	113.3	102.2
1998-99	116.1	118.9	106.1
<b>Quarters</b>			
Sep 98	116.1	115.4	104.9
Dec 98	116.3	118.1	105.8
Mar 99	116.0	120.8	106.2
Jun 99	115.9	121.4	107.5
Sep 99	116.9	121.6	111.5
Dec 99	117.1	nya	nya

Base of each index: 1989-90 = 100.0.

Source: ABS Catalogue Nos. 6408.0 and 6416.0.

For more information regarding Price Indexes, please contact Peter Hodgson on (08) 9360 5922.

# 5.4

## PRICE INDEX OF MATERIALS USED IN BUILDING OTHER THAN HOUSE BUILDING: PERTH

### SPECIAL SERIES.....

	<i>All groups</i>	<i>All Electrical materials</i>	<i>All Mechanical services</i>	<i>All Plumbing materials</i>
<b>Financial Years</b>				
1996-97	114.6	110.6	113.3	119.2
1997-98	114.6	109.3	113.4	124.6
1998-99	114.1	107.8	116.1	124.3
<b>Quarters</b>				
Sep 98	114.2	107.9	115.0	124.0
Dec 98	114.2	107.4	116.6	124.0
Mar 99	113.9	107.9	116.3	124.8
Jun 99	114.1	107.8	116.5	124.5
Sep 99	114.4	107.5	117.4	127.6
Dec 99	115.0	108.0	117.8	129.8

### SELECTED MAJOR BUILDING MATERIALS.....

	<i>Structural timber</i>	<i>Clay bricks</i>	<i>Ready mixed concrete</i>	<i>Structural steel</i>	<i>Aluminium windows</i>
<b>Financial Years</b>					
1996-97	106.6	124.1	120.1	113.9	117.0
1997-98	106.8	127.8	117.4	116.5	117.9
1998-99	105.0	131.4	114.5	117.5	115.0
<b>Quarters</b>					
Sep 98	106.5	131.4	115.9	117.6	117.0
Dec 98	104.6	131.4	115.0	117.4	113.8
Mar 99	105.0	131.4	113.3	117.4	113.8
Jun 99	103.9	131.2	113.9	117.4	115.2
Sep 99	100.8	134.8	113.8	117.1	115.2
Dec 99	101.6	133.3	114.5	118.5	116.4

Base of each index 1989-90 = 100.0.

Source: ABS Catalogue No. 6407.0.

*For more information regarding these tables, please contact Peter Hodgson on (08) 9360 5922.*

# 6.1

## LIVESTOCK SLAUGHTERED ('000)

	CATTLE.....			OTHER.....			
	<i>Bulls, bullocks, steers</i>	<i>Cows, heifers</i>	<i>Total (excluding calves)</i>	<i>Calves</i>	<i>Sheep</i>	<i>Lambs</i>	<i>Pigs</i>
<b>Financial Years</b>							
1996-97	192.3	214.5	406.8	5.6	2 635.2	2 081.2	550.2
1997-98	196.0	252.1	448.1	5.6	2 717.4	1 856.5	550.0
1998-99	197.9	240.8	438.7	6.4	1 938.0	2 076.4	568.7
<b>Quarters</b>							
Sep 98	45.1	60.6	105.7	1.5	390.1	477.8	144.6
Dec 98	66.6	65.6	132.3	1.6	505.2	614.4	135.1
Mar 99	45.9	61.0	106.9	1.6	580.7	478.7	150.3
Jun 99	40.3	53.6	93.9	1.8	462.0	505.5	138.8
Sep 99	42.2	54.0	96.1	2.3	407.2	553.4	143.6
Dec 99	55.8	56.2	112.0	3.0	522.4	659.5	128.1

Note: From June 1998, the collection frequency of this information changed from monthly to quarterly.

Source: ABS Catalogue No. 7215.0.

# 6.2

## MEAT PRODUCED (a)(Tonnes Carcass Weight)

	<i>Beef</i>	<i>Veal</i>	<i>Mutton</i>	<i>Lamb</i>	<i>Pig meat</i>
<b>Financial Years</b>					
1996-97	91 369	319	52 164	35 701	38 837
1997-98	102 482	312	56 442	33 581	35 499
1998-99	104 979	436	39 766	39 021	37 534
<b>Quarters</b>					
Sep 98	24 727	91	7 812	8 813	9 571
Dec 98	32 820	104	10 731	11 643	8 563
Mar 99	25 840	108	11 938	9 100	9 752
Jun 99	21 592	133	9 285	9 465	9 649
Sep 99	22 568	180	8 209	10 388	9 457
Dec 99	27 780	249	10 863	12 343	8 371

(a) Red meat is shown in carcass weight and excludes offal.

Note: From June 1998, the collection frequency of this information changed from monthly to quarterly.

Source: ABS Catalogue No. 7215.0.

*For more information regarding these tables, please contact Pamela Prince on (08) 9360 5207.*

# 6.3

## WOOL RECEIVALS AND LIVE SHEEP EXPORTS

	RECEIVALS OF TAXABLE WOOL BY BROKERS AND DEALERS(a) .....		EXPORT OF LIVE SHEEP (b).....		
	<i>Bales</i>	<i>Tonnes</i>	<i>Quantity</i>	<i>Gross Value</i>	<i>Gross Weight</i>
	'000		'000	\$'000	'000t
<b>Financial Years</b>					
1996-97	909 768	160 021	3 747.5	136 613	188.5
1997-98	699 492	153 885	3 283.9	130 798	167.0
1998-99	688 021	142 225	4 033.1	148 855	206.7
<b>Quarters</b>					
Sep 98	191 427	r 39 784	854.2	32 928	43.9
Dec 98	191 210	r 41 572	1 187.2	44 067	62.2
Mar 99	198 316	r 40 321	1 120.9	40 845	58.0
Jun 99	107 068	r 23 838	870.8	31 015	42.5
Sep 99	r 183 613	r 37 784	r 796.9	r 32 048	r 40.2
Dec 99	221 683	44 670	1 133.1	42 642	56.5

(a) Source: National Council of Wool Selling Brokers.

(b) Source: ABS FASTTRACCS Service.

Note: From June 1998, the collection frequency of this information changed from monthly to quarterly.

*For more information regarding these tables, please contact Pamela Prince on (08) 9360 5207.*



# 6.4

## ENERGY PRODUCTION

	Coal(a)	Electricity generated	Gas for distribution(b)	Crude oil(c)(d)	Natural gas(d)
	'000 tonnes	million kWh	million MJ	mega-litres	million m <sup>3</sup>
<b>Financial Years</b>					
1996-97	5 557	16 738	204 257	15 974	16 713
1997-98	5 709	17 203	230 201	17 561 p	17 707 p
1998-99	5 797	16 718	228 774	13 823 p	16 941 p
<b>Quarters</b>					
Sep 98	1 249	4 259	58 576	4 619 p	4 822 p
Dec 98	1 596	4 127	59 181	3 149 p	3 068 p
Mar 99	1 580	4 325	55 033	3 114 p	4 443 p
Jun 99	1 372	4 007	55 948	2 941 p	4 608 p
Sep 99	1 611	4 399	59 661	4 036 p	4 861 p
Dec 99	n.y.a	4 541	57 238	n.y.a	n.y.a

(a) Source: Department of Minerals and Energy.

(b) Available for issue through mains.

(c) Includes condensate.

(d) Source: Australian Bureau of Agriculture and Resource Economics.

*For more information regarding these tables, please contact Pamela Prince on (08) 9360 5207.*

# 6.5

## MINERAL EXPLORATION: EXPENDITURE BY TYPE OF MINERAL SOUGHT

	METALLIC MINERALS.....			NON-METALLIC MINERALS.....		Total minerals \$m
	Base metals(a)	Gold	Other	Diamonds	Other	
	\$m	\$m	\$m	\$m	\$m	
<b>Financial Years</b>						
1996-97	88.1	531.7	n.a.	38.6	n.a.	691.7
1997-98	117.1	459.3	3.8	31.4	2.1	660.4
1998-99	90.9	330.7	3.4	32.9	0.9	523.1
<b>Quarters</b>						
Jun 98	32.9	111.5	2.6	7.6	0.4	173.4
Sep 98	30.3	86.1	0.8	10.4	0.3	154.0
Dec 98	24.2	102.0	0.9	12.4	0.3	157.3
Mar 99	20.9	67.2	1.1	2.7	0.2	102.3
June 99	15.5	75.4	0.6	7.4	0.1	109.4
Sep 99	16.1	67.9	1.9	10.6	0.2	107.9

(a) Includes copper, lead, zinc, silver, nickel and cobalt.

Source: ABS Catalogue No. 8412.0.

For more information regarding these tables, please contact Pamela Prince on (08) 9360 5207.

# 6.6

## MINERAL PRODUCTION

	Iron ore '000 tonnes	Bauxite '000 tonnes	Gold tonnes	Ilmenite '000 tonnes	Nickel '000 tonnes	Diamonds '000 carats
<b>Financial Years</b>						
1996-97	150 711	27 466	227.0	1 910	115	42 566
1997-98	155 485	28 544	240.5	2 220	134	43 046
1998-99 p	137 470	29 237	218.1	2 130	130	35 910
<b>Quarters</b>						
Jun 98	38 310	7 183	57.5	582	36	9 733
Sep 98 p	37 837	6 982	54.7	592	38	12 481
Dec 98 p	38 567	7 416	58.9	482	37	9 056
Mar 99 p	35 372	7 723	51.9	538	20	7 109
Jun 99 p	34 445	7 116	52.6	518	34	7 264
Sep 99 p	38 269	8 085	54.6	434	35	7 906

Source: Australian Bureau of Agricultural and Resource Economics.

For more information regarding these tables, please contact Pamela Prince on (08) 9360 5207.

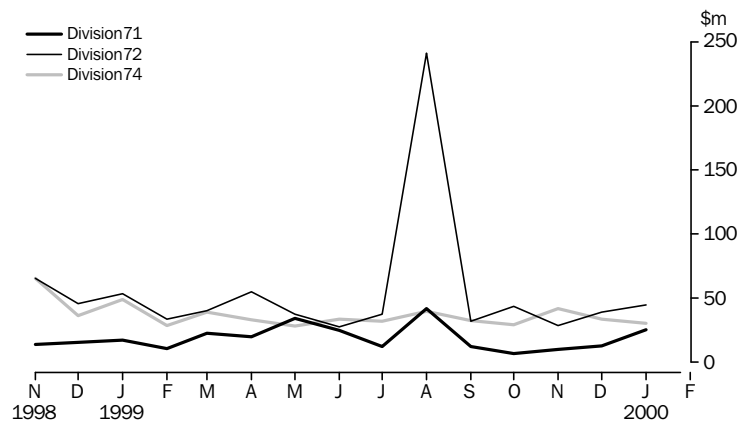
# 7.1

## IMPORTS BY SELECTED DIVISIONS

	33	71	72	74	78
	Petroleum, petroleum products, etc	Power generating machinery and equipment	Machinery specialised for particular industries	General industrial machinery and equipment	Road vehicles
	\$m	\$m	\$m	\$m	\$m
<b>Financial Years</b>					
1996-97	1 043.6	309.8	696.8	420.9	811.7
1997-98	799.0	208.0	618.8	596.7	1 051.9
1998-99	794.2	225.5	583.8	540.4	1 005.1
<b>Months</b>					
Nov 98	64.6	14.0	65.4	65.3	70.8
Dec 98	52.4	15.4	45.6	36.6	78.3
Jan 99	58.0	17.4	53.6	49.2	90.9
Feb 99	59.8	10.5	33.8	29.0	81.2
Mar 99	47.7	22.6	40.1	39.3	88.0
Apr 99	91.5	19.9	54.9	33.1	99.1
May 99	84.4	34.3	38.0	28.2	79.0
Jun 99	65.9	24.7	27.9	33.6	83.6
Jul 99	89.8	12.2	37.3	32.0	102.4
Aug 99	97.7	41.9	241.2	39.7	96.6
Sep 99	86.9	12.4	31.8	32.6	76.5
Oct 99	105.3	7.0	43.4	29.3	91.5
Nov 99	108.4	10.3	28.8	41.7	84.6
Dec 99	116.8	13.0	39.1	33.6	75.5
Jan 00	98.8	25.3	44.9	30.3	70.4

Source: ABS FASTTRACCS Service.

### IMPORTS BY SELECTED DIVISION



Source: ABS FASTTRACCS Service.

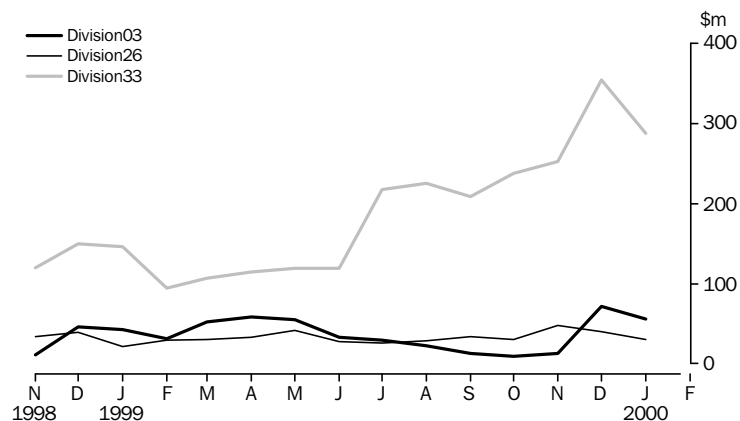
# 7.2

## EXPORTS BY SELECTED DIVISIONS

	03	04	26	28	33
	<i>Fish, crustaceans, molluscs, etc</i>	<i>Cereals and cereal preparations</i>	<i>Textile fibres and waste (excluding yarn or fabric)</i>	<i>Metalliferous ores and metal scrap</i>	<i>Petroleum, petroleum products etc.</i>
	\$m	\$m	\$m	\$m	\$m
<b>Financial Years</b>					
1996-97	371.3	1 667.6	646.5	3 614.6	1 942.8
1997-98	337.2	1 860.5	655.3	4 219.1	2 046.8
1998-99	406.0	1 770.4	410.3	4 300.8	1 670.3
<b>Months</b>					
Oct 98	8.2	130.3	40.4	361.5	159.2
Nov 98	11.0	113.2	33.8	367.8	119.4
Dec 98	45.7	159.8	39.1	396.5	149.7
Jan 99	42.8	194.3	21.3	341.1	146.3
Feb 99	30.8	161.2	29.0	324.0	93.9
Mar 99	51.8	167.9	30.5	354.4	106.3
Apr 99	58.3	119.4	32.4	300.0	114.4
May 99	54.9	97.0	41.6	295.3	118.8
Jun 99	32.6	162.9	27.5	358.2	119.3
Jul 99	29.3	129.7	26.1	353.3	217.1
Aug 99	22.1	95.8	28.1	334.3	225.0
Sep 99	12.9	87.4	33.6	370.1	208.8
Oct 99	9.5	95.5	30.4	355.0	237.3
Nov 99	12.2	104.5	47.7	368.2	252.6
Dec 99	71.8	167.7	40.1	339.9	354.1
Jan 00	55.6	146.6	30.0	274.6	287.9

Source: ABS FASTTRACCS Service.

### EXPORTS BY SELECTED DIVISION



Source: ABS FASTTRACCS Service.

For further information regarding these tables, please contact Information Inquiries on (08) 9360 5140.

# 8.1

## NEW MOTOR VEHICLE REGISTRATIONS (a)

	WESTERN AUSTRALIA.....					PERTH STATISTICAL DIVISION.....	
	Passenger vehicles	Light commercial vehicles	Trucks and buses	Motorcycles and scooters Total(b)	Motorcycles and scooters	Total(b)	Motorcycles and scooters
<b>Financial Years</b>							
1996-97	56 984	10 828	2 207	70 019	2 692	54 721	1 837
1997-98	67 675	11 486	2 295	81 456	3 103	63 131	2 104
1998-99	66 573	10 823	2 375	79 771	3 161	62 268	2 155
<b>Months</b>							
Nov 98	5 436	821	186	6 443	343	5 079	280
Dec 98	5 941	928	191	7 060	349	5 504	247
Jan 99	4 414	832	156	5 402	216	4 108	150
Feb 99	5 011	908	185	6 104	253	4 762	177
Mar 99	6 115	1 072	208	7 395	260	5 751	170
Apr 99	5 185	727	157	6 069	223	4 666	138
May 99	5 128	878	197	6 203	223	4 871	140
Jun 99	7 015	1 281	281	8 577	208	6 484	143
Jul 99	4 206	685	119	5 010	269	4 135	179
Aug 99	4 779	843	185	5 807	268	4 594	171
Sep 99	4 692	756	181	5 629	275	4 517	190
Oct 99	4 657	801	177	5 635	316	4 434	237
Nov 99	5 064	880	190	6 134	363	4 808	282
Dec 99	5 296	925	164	6 385	329	5 024	241
Jan 00	4 109	610	122	4 841	237	3 770	168

(a) Excludes plant and equipment, caravans and trailers. (b) Excludes motor cycles.

Source: Unpublished New Motor Vehicle Registrations (9303.5.40.001).

# 8.2

## VEHICLE REGISTRATION STATISTICS (a)

	PASSENGER VEHICLES.....		OTHER VEHICLES.....		TOTAL.....	
	Original	Trend	Original	Trend	Original	Trend
<b>Months</b>						
Nov 98	5 436	5 385	1 007	1 096	6 443	6 372
Dec 98	5 941	5 360	1 119	1 099	7 060	6 364
Jan 99	4 414	5 406	988	1 104	5 402	6 460
Feb 99	5 011	5 475	1 093	1 098	6 104	6 582
Mar 99	6 115	5 517	1 280	1 079	7 395	6 665
Apr 99	5 185	5 486	884	1 055	6 069	6 652
May 99	5 128	5 376	1 075	1 035	6 203	6 525
Jun 99	7 015	5 201	1 562	1 023	8 577	6 311
Jul 99	4 206	4 996	804	1 029	5 010	6 073
Aug 99	4 779	4 834	1 028	1 044	5 807	5 870
Sep 99	4 692	4 766	937	1 055	5 629	5 828
Oct 99	4 657	4 780	978	1 053	5 635	5 833
Nov 99	5 064	4 836	1 070	1 040	6 134	5 876
Dec 99	5 296	4 900	1 089	1 020	6 385	5 920
Jan 00	4 109	5 034	732	1 000	4 841	6 034

(a) Excludes motorcycles, plant and equipment, caravans and trailers.

Source: Unpublished New Motor Vehicle Registrations (9303.5.40.001).

For more information regarding these tables, please contact Elspeth Wilson on (08) 9360 5242.

# 9.1

## PRIVATE NEW CAPITAL EXPENDITURE BY SELECTED INDUSTRY GROUPS

	SELECTED INDUSTRY.....			TOTAL.....	
	Mining \$m	Manufacturing \$m	Other selected industries \$m	Original \$m	Seasonally adjusted \$m
<b>Financial Years</b>					
1996-97	4 158	625	1 834	6 617	6 627
1997-98	5 759	1 049	1 953	8 760	8 742
1998-99	3 645	1 284	2 037	6 965	7 015
<b>Quarters</b>					
Sep 98	1 190	408	616	2 214	2 338
Dec 98	824	304	509	1 637	1 549
Mar 99	893	332	413	1 638	1 703
Jun 99	738	240	498	1 476	1 425
Sep 99	740	r 271	r 470	1 480	1 555
Dec 99	641	291	291	1 478	1 409

Source: ABS Catalogue No. 5646.0.

*For more information regarding these tables, please contact  
John Blanchette on Sydney (02) 9268 4357.*

## WESTERN AUSTRALIA.....

Indicator	Period	Unit	Current Australian figure	Current figure	Change from last period (%)	Figure one year ago	Change from one year ago(%)
<b>Population</b>							
Estimated resident population	Jun qtr 99 p	'000	18 966.8	1 861.0	0.3	1 829.1	1.7
Natural increase	Jun qtr 99 p	No.	30 378	4 055	17.8	3 731	8.7
<b>Tourism</b>							
<i>Hotels, motels etc and serviced apartments</i>							
Guest arrivals	Sep qtr 99	'000	8 307	709	13.5	659	7.6
Guest rooms available	Sep qtr 99	No.	186 840	17 804	0.1	17 015	4.6
Room occupancy rates	Sep qtr 99	%	161	59	11.3	60	-1.7
<i>Overseas visitors</i>							
Short-term arrivals	Dec 99	No.	460 800	44 350	-3.1	47 400	-6.4
Long-term arrivals	Dec 99	No.	6 830	610	-1.6	640	-4.7
<i>Resident Departures</i>							
Short-term departures	Dec 99	No.	309 300	37 410	34.7	35 170	6.4
Long-term departures	Dec 99	No.	6 100	690	-4.2	780	-11.5
<b>Employment</b>							
<i>Employed persons</i>							
Trend	Feb 00	'000	8 938.3	929.8	0.2	893.6	4.1
<i>Unemployed persons</i>							
Trend	Feb 00	'000	649.2	63.9	-0.1	68.3	-6.4
<i>Participation rate</i>							
Trend	Feb 00	%	63.4	67.2	0.0	66.3	0.9
<i>Unemployment rate</i>							
Trend	Feb 00	%	6.8	6.4	-0.1	7.1	-0.7
<i>Full-time adult average weekly earnings</i>							
<i>Trend</i>							
Males	Nov 99	\$	861.90	899.40	1.7	869.30	3.5
Females	Nov 99	\$	697.20	661.80	0.7	645.50	2.5
Persons	Nov 99	\$	800.70	814.00	1.3	790.40	3.0
<b>Retail</b>							
<i>Monthly retail turnover</i>							
Original	Jan 00	\$m	11 623.5	1 153.1	-25.9	1 144.4	0.8
Trend	Jan 00	\$m	12 034.9	1 191.8	0.2	1 167.7	2.1
<b>Construction</b>							
<i>Building Approvals</i>							
Dwelling Units	Jan 00	No.	12 734	1 675	-15.2	1 307	28.2
Value of all building	Jan 00	\$m	2 705.2	269.2	-9.8	365.0	-26.2
<i>House Price Indexes</i>							
Materials used in house building	Dec qtr 99	Index No.	121.5	117.1	0.2	116.3	0.7
Established houses	Sep qtr 99	Index No.	136.8	121.6	0.2	115.4	5.4
Project homes	Sep qtr 99	Index No.	117.0	111.5	3.7	104.9	6.3
<b>Mineral Exploration</b>							
Gold	Sep qtr 99	\$m	101.5	67.9	-9.9	86.1	-21.1
Other minerals	Sep qtr 99	\$m	78.6	40.0	17.6	67.9	-41.1
<b>Overseas Trade</b>							
Imports	Jan 00	\$m	8 114.4	702.6	-12.2	750.2	-6.3
Exports	Jan 00	\$m	6 812.3	1 909.5	-11.1	1 677.5	13.8
<b>Transport</b>							
<i>Passenger vehicle registrations</i>							
Original	Jan 00	No.	42 236	4 109	-22.4	4 414	-6.9
Trend	Jan 00	No.	52 311	5 034	5.5	5 406	-6.9
<i>Total registrations</i>							
Original	Jan 00	No.	50 257	4 841	-24.2	5 402	10.4
Trend	Jan 00	No.	63 870	6 034	3.2	6 460	-6.6
<b>Finance</b>							
<i>Private New Capital Expenditure</i>							
Original	Dec qtr 99	\$m	10 950	1 478	-0.1	1 637	-9.7
Seasonally adjusted	Dec qtr 99	\$m	10 214	1 409	-9.4	1 549	-9.1

## SELF-HELP ACCESS TO STATISTICS

- CPI INFOLINE* For current and historical Consumer Price Index data, call 1902 981 074 (call cost 75c per minute).
- DIAL-A-STATISTIC* For the latest figures for National Accounts, Balance of Payments, Labour Force, Average Weekly Earnings, Estimated Resident Population and the Consumer Price Index call 1900 986 400 (call cost 75c per minute).
- INTERNET* [www.abs.gov.au](http://www.abs.gov.au)
- LIBRARY* A range of ABS publications is available from public and tertiary libraries Australia-wide. Contact your nearest library to determine whether it has the ABS statistics you require.

## WHY NOT SUBSCRIBE?

- PHONE* +61 1300 366 323
- FAX* +61 3 9615 7848

## CONSULTANCY SERVICES

ABS offers consultancy services on a user pays basis to help you access published and unpublished data. Data that is already published and can be provided within 5 minutes is free of charge. Statistical methodological services are also available. Please contact:

<i>INQUIRIES</i>	<i>City</i>	<i>By phone</i>	<i>By fax</i>
	Canberra	02 6252 6627	02 6207 0282
	Sydney	02 9268 4611	02 9268 4668
	Melbourne	03 9615 7755	03 9615 7798
	Brisbane	07 3222 6351	07 3222 6283
	Perth	08 9360 5140	08 9360 5955
	Adelaide	08 8237 7400	08 8237 7566
	Hobart	03 6222 5800	03 6222 5995
	Darwin	08 8943 2111	08 8981 1218

*POST* Client Services, ABS, PO Box 10, Belconnen ACT 2616

*EMAIL* [client.services@abs.gov.au](mailto:client.services@abs.gov.au)



2130550003003  
ISSN 0727-2367

RRP \$17.50